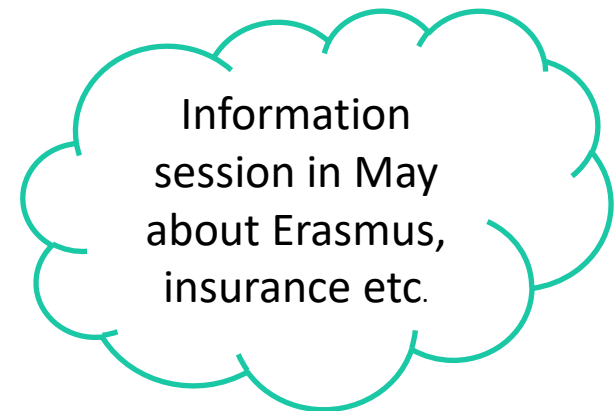


# LiU Global – Get Connected

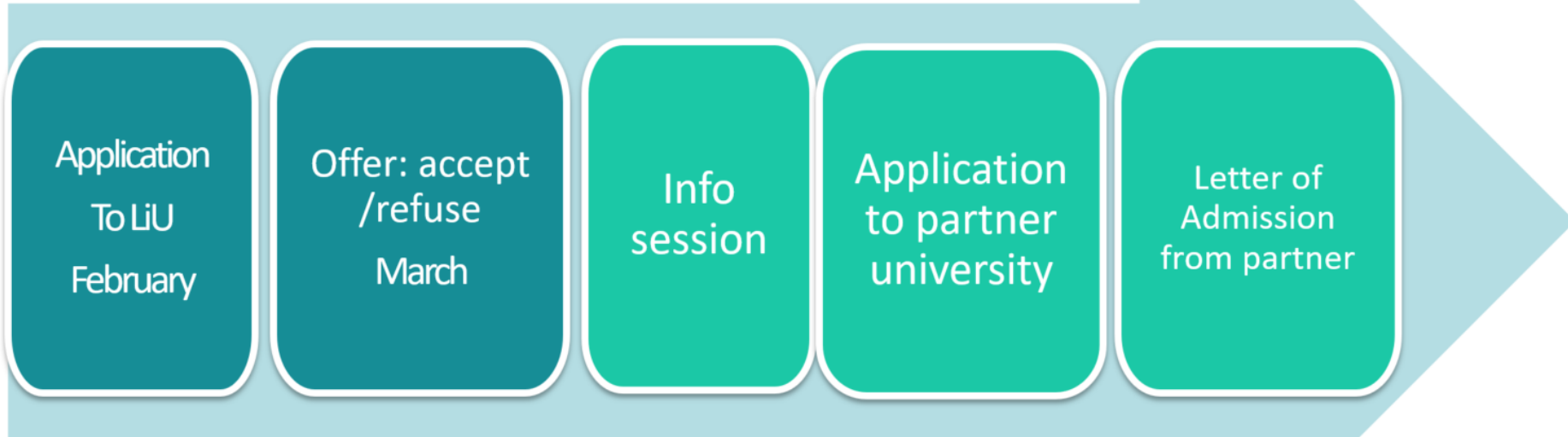
## Exchange studies 2021/22

Lisa Dobrosch  
Coordinator  
Faculty of Arts and Sciences

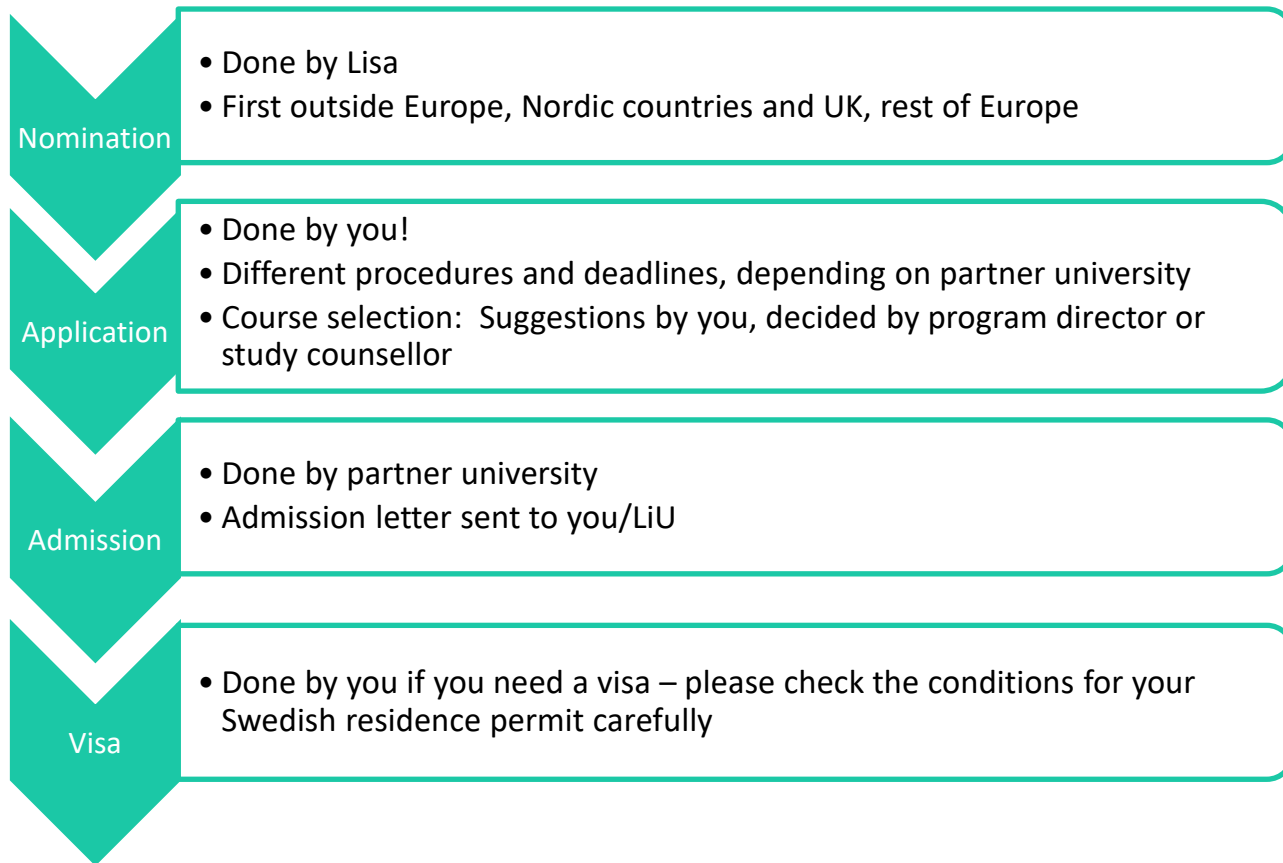
- What happens next?
- Application to partner
- Practical questions
- Note!



# What happens next?



# What happens next?



### Western Carolina University: Faculty-wide agreement, Faculty of Arts and Sciences (Bilateral-studies - Filfak)

Partner university	<ul style="list-style-type: none"> <li>United States-Western Carolina University</li> </ul>
Level	Undergraduate / Bachelor, Postgraduate / Master
Other information	New exchange agreement for the academic year 2018/19. <a href="#">Fact Sheet</a>
Exchange places (total number of semesters available)	2 (2019/20)
Website for exchange students	<a href="http://internationalprogramsservices.cmail20.com/t/ViewEmail/i/AF85D1B0FAB">http://internationalprogramsservices.cmail20.com/t/ViewEmail/i/AF85D1B0FAB</a>
Exchange programme	Bilateral Studies, Bilateral Staff
Subject area	Faculty-wide agreement, Faculty of Arts & Sciences
Language of instruction	English
Course catalogue	<a href="#">Course catalogue</a> > See section Academic information Please note that there are courses not available for exchange students. Find more information in the website above.
Restrictions/Clarifications	Language Requirement: TOEFL Score: Minimum 68 (iBT) or IELTS: 6. Students with a score of 68-78 on iBT, or 6-6.4 on IELTS, will be registered in one English bridge credit-bearing course during their first semester. See Website for Exchange Students for more information.
Is TOEFL/IELTS (or similar) test a requirement?	Yes
Country specific information	VISA regulations may change with short notice. Students going on exchange to the US should be aware that requirements (such as for TOEFL, insurance costs) can change from the information given in this information profile.  Regarding courses: The first year at American universities is often a foundation year with introductory courses, so called "100-level courses" or "Freshman-courses". The course code often starts with 100 or 1000. These courses are often not considered to be on an academic level equivalent to the Swedish academic level and thus can not be transferred. Remember to check your course selection carefully with your programme.
Compulsory costs	Health Insurance Requirements: All international students are required to have sufficient medical insurance coverage as determined by the US Department of State. Students have the option to waive the WCU insurance or purchase the insurance through WCU. On application, students must fill out financial guarantee form covering at least \$6,000 USD per semester. Students will not pay tuition fees, but they will have to pay fees for meal plan, orientation fee, international student fee, rental fees, eventual insurance fee, etc.
Full time studies at partner university (30 hp/ects per semester)	15 credits hours per semester (bachelor) 12 credit hours per semester (master)
Semester dates (approx.)	Semester 1: mid-August to mid-December Semester 2: beginning of January to mid-May
Application procedure	See Website for Exchange Students
Housing	See Website for Exchange Students

Is TOEFL required?

**Note: New information from partners reaches us late sometimes!**

# Application to partner university

# Application to university

- Information about the application can often be found on the partner university's website for exchange students. Sometimes it is sent by e-mail to nominated students
- Questions regarding the application, contact the partner university or Lisa
- Deadlines, the process, documents needed etc. are different depending on the partner

**It's your responsibility to submit a complete application on time!**

# Documents

- Transcript of records / Academic records  
Courses and grades from Ladok. Print via student portal
- Certificate of enrolment  
Print via student portal
- Recommendation letter  
Ask your program director to write it
- Letter of intent and CV
- Financial statement  
If you have study aid from CSN: Form [5514W](#)  
Certificate from bank



# Documents continuation

- Photo
- Certificates:
  1. That you are nominated
  2. B2-level in English/other language
  3. That you have insurance
  4. Other certificates needed: contact us
- Signature from LiU  
Lisa will sign for you. Send via e-mail in time
- If the university requires your application to be sent by LiU, please hand in the complete application *at least one week before deadline* to us!

# Course selection

- Either in connection with application or later. Differs between the universities
- Discuss course selection with your program director/study counsellor. What are the requirements for the credit transfer?
- 30 credits abroad? Universities have different credit systems. The number of credits you need to study is stated on the information profile for each university

# Practical questions

# Immigration & stipend issues

- Holders of a residence permit for studying in Sweden  
Exchange studies or placements abroad will affect your **residence permit** in Sweden and your eligibility for your **Swedish personal identity number**. Contact with the [Swedish Migration Agency](#) and the [Swedish Tax Agency](#)
- SI stipend holders  
Contact SI about your planned exchange and if it effects your stipend

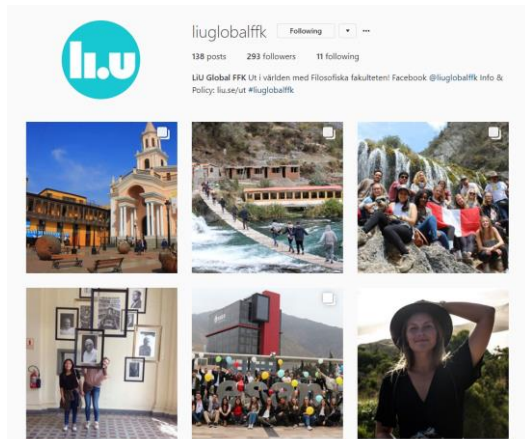
# Visa

- Do you need a visa?
- Does it cost?
- Which documents do I need for application?
- Check the information on the embassy's webpage

Check also medical requirements such as vaccination, x-ray etc.

# Housing

- Different service provided by universities
- See information profile and university's webpage
- What have previous exchange students done?



## Northumbria University, Newcastle



Country	 United Kingdom
City	Newcastle-Upon-Tyne
Institution	Northumbria University, Newcastle
Erasmus code	UK NEWCAST02
University website	<a href="http://northumbria.ac.uk">http://northumbria.ac.uk</a>

Exchange places Evaluation reports

### Travel report : Evaluation Report

Evaluation report	<a href="#">Evaluation Report</a>
Degree programme at LiU	Bachelor programme in Human Resource Management and Work Sciences
Exchange year	2017/18

### Travel report : Evaluation Report

Evaluation report	<a href="#">Evaluation Report</a>
Degree programme at LiU	Bachelor programme in Human Resource Management and Work Sciences
Exchange year	2017/18

# Finances

## Stipends

- Erasmus/Nordplus/Linneaus Palme:  
more information during next information session
- <https://www.student.liu.se/studenttjanster/stipendier?l=en&sc=true>

## CSN

- Check the CSN website about exchange studies
- You are admitted to exchange studies in Ladok, you don't need to hand in a certificate but CSN can see your admission in Ladok!
- If you need a financial support certificate you can use form 5514W from CSN  
<https://www.csn.se/blanketter.html>
- Recommendation: apply for full year at CSN

# Insurance

- You are covered by LiU with "Student-UT" insurance as long as there is no travel ban from the Swedish Ministry of Foreign Affairs
- If the travel ban is set in place when you already are in the country you should leave within 30 days

## Basic cover for:

- 24 hours a day in the country of study/internship
- Two weeks before and after this period, and during direct travel between the host country and the home address or term-time address in Sweden
- During holidays provided that the student stays in the host country and the studies continue after the holidays
- During direct travel from one host country to another, in order to continue studies in that country
- With no excess except for Property Cover, for which the excess is SEK 1,500
- Few universities still require extra insurance, see information profile of the university
- Always check your own needs and insurances



# Note!

# Covid-19 pandemic

Be prepared for the pandemic to effect your exchange:

- Travel ban by Swedish Ministry
- Travel ban/closed borders by receiving country
- Requirement of quarantine, test result, vaccination etc
- Partner university cancels / offers only online exchange
- No flights

➤ You are always welcome to study at LiU

# Remember to

- Check your LiU-mail
- Check if you have a valid passport
- Don't wait until the last minute!
- Keep calm, we will sort out misunderstandings and mistakes
- Specific questions (e.g. about accommodation, courses) > partner university
- You represent yourself and LiU in all contact with the partner. Remember cultural differences.

# LiU Global - Off You Go!

In May

- Information about Erasmus
- Details on insurance
- Cultural chock
- And more

Invitation will be send out via the International Office

# Contact

Lisa Dobrosch

[International@ffk.liu.se](mailto:International@ffk.liu.se)

013-28 10 74

Online meeting, booking via webpage [www.liu.se/ut](http://www.liu.se/ut)

Every Tuesday and Thursday between 12.00-13.00

# Questions?

[www.liu.se](http://www.liu.se)